

UNEP Risø Centre – Energy, Climate and Sustainable Development

Organisational set-up :

- Established jointly by UNEP, Danida & Risø in 1990
- Governed by a Management and Policy Committee
- Assisted by an International Scientific Advisory Panel
- Risø - Programme on Energy, Environment & Development Planning



UNEP Risø Centre – Energy, Climate and Sustainable Development



International and Danish
research team of 22 economists
and scientists.



Centre Activities

Thematic Structure

- Energy
- Climate Change
- Sustainable Development

Activity Structure

- Energy & Poverty
- Energy Efficiency & Renewable Energy
- CDM
- Development & Climate
- National and International Policy Instruments
- Energy Sector Reform
- Transport
- Capacity Building

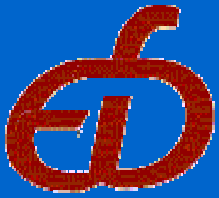
Capacity Building for CDM

Capacity Development in 12
Developing Countries focusing on:

- Institutional set-up and expertise
- Awareness raising
- Involvement of private sector
- Development of a pipeline of potential CDM projects
- Development of analytical guidelines and training courses

Project sponsored by Dutch Government with US\$10 million





Energy for Development (EFD) Network

- internal Risø networking collaboration
- SYS (UNEP Centre), VEA, BIO
- established 2004 with small activities budget
- continuing as networking activity
- primarily contact between URC and VEA
- projects as EFD: EUEI Workshops, DEA, APPLES, ...
- website www.e4d.net



EUEI Facilitation Workshops

UNEP
RISØ
CENTRE

- EU Energy Initiative
- DK support – René Karottki in EUEI Secretariat + workshops and follow-up
- EU/ACP Facility – €220 million (Feb. 2006)
- multi-sector workshops in W. and S&E Africa
- Ouagadougou – October 2004
- Maputo – April 2005
- 7 multi-sector country teams
- facilitated group work – policy ideas for Energy Facility



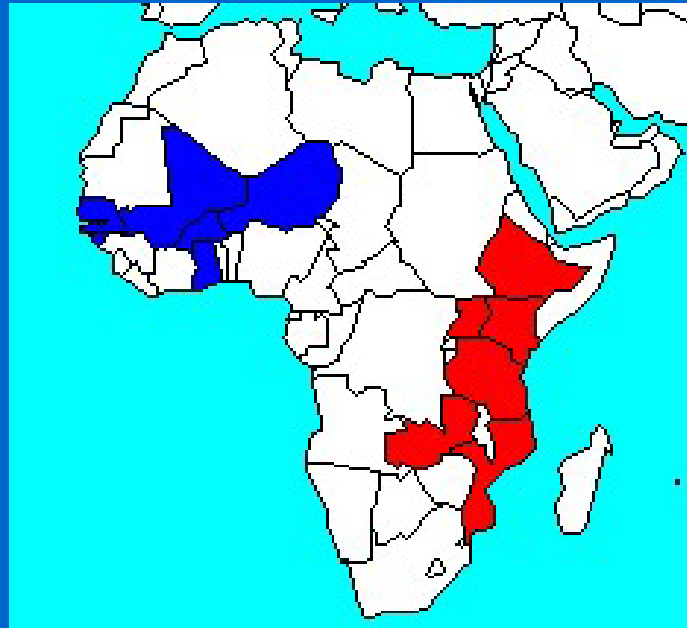
EUEI Facilitation Workshops

EU Energy Initiative – a WSSD initiative

UNEP
RISØ
CENTRE

**Ouagadougou
workshop, Oct. 2004**

Burkina Faso
The Gambia
Ghana
Guinea Bissau
Mali
Niger
Senegal



**Maputo workshop,
April 2005**

Ethiopia
Kenya
Malawi
Mozambique
Tanzania
Uganda
Zambia

Follow-up activities: stakeholder consultation, project formulation, leading to submission to the EU/ACP Energy Facility being prepared by EUEI Secretariat in Brussels.



Development and Energy in Africa (DEA)

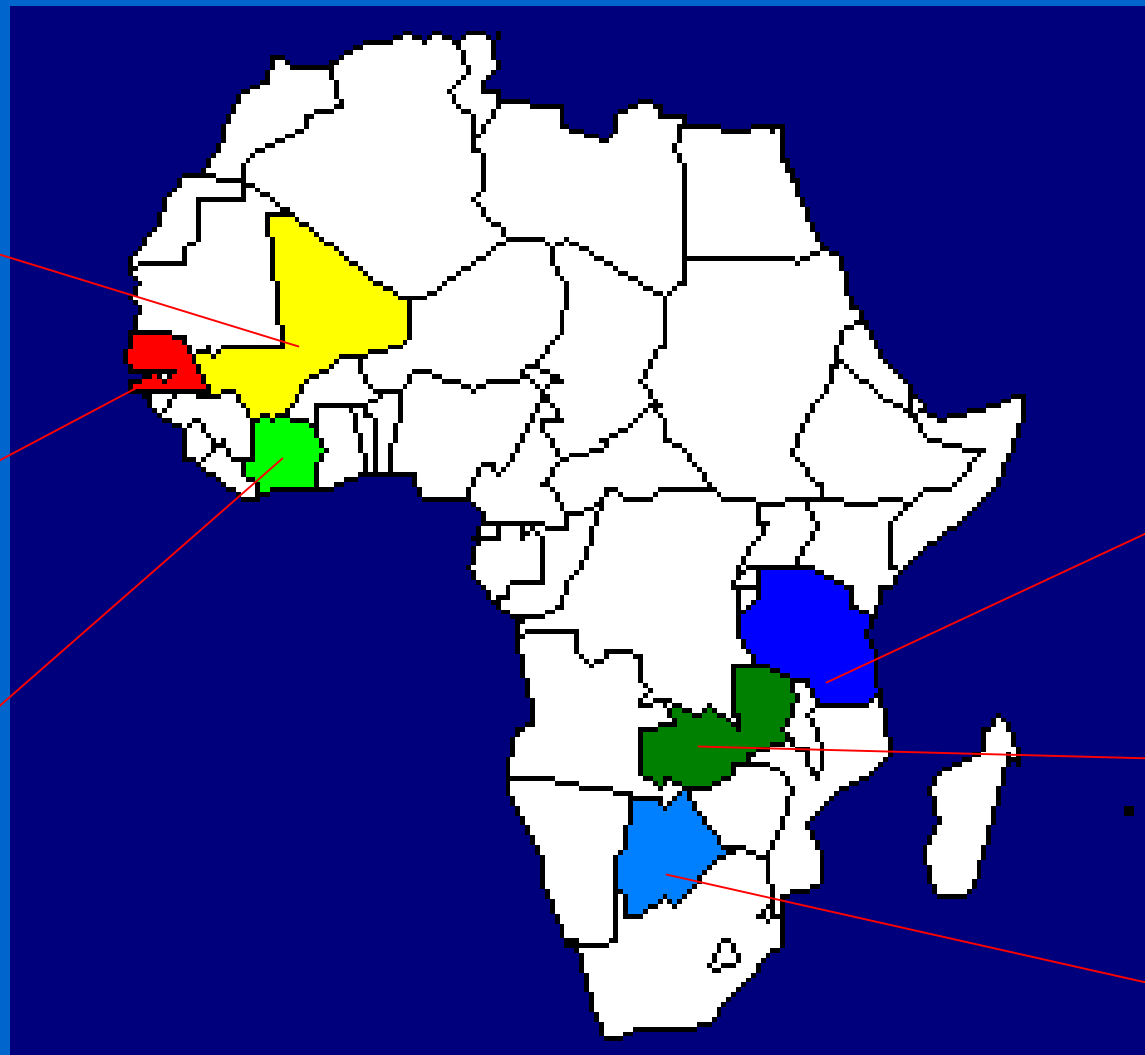
UNEP
RISØ
CENTRE

- A project of the EC COOPENER Programme
- start 1 May 2005, duration 30 months
- implemented by Risø National laboratory, Denmark (coordinator)
- Energy Centre of the Netherlands (ECN)
- 6 African Centres

Overall aims:

- to identify and examine the developmental impacts of energy innovations
- to use the information obtained to improve on-going and future energy interventions

Development and Energy in Africa (DEA)



MFC, Mali



ENDA, Senegal



KITE, Ghana



TaTEDO, Tanzania



CEEEZ, Zambia

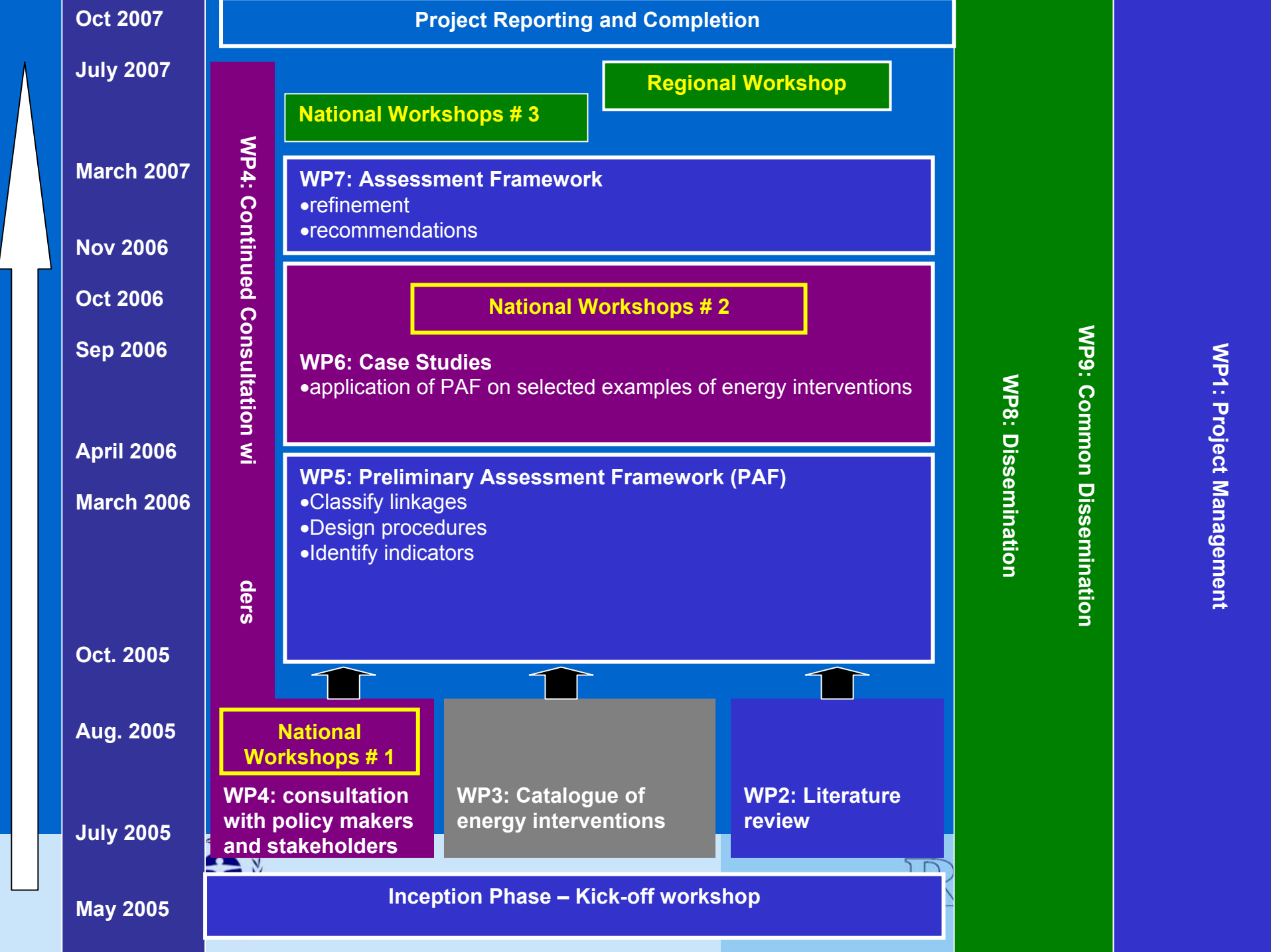


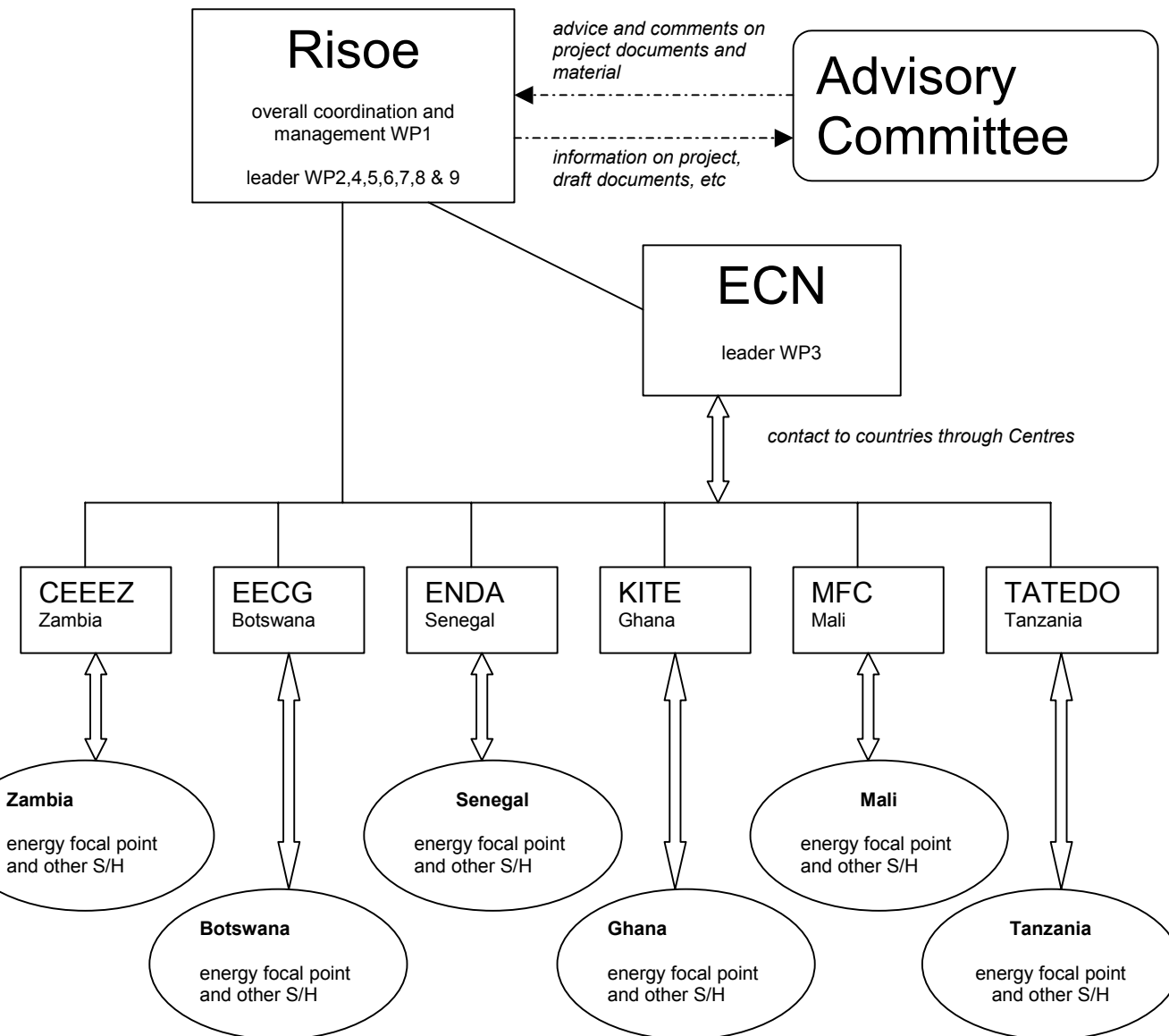
EECG, Botswana



Immediate Objectives

- to establish and apply an Assessment Framework for evaluating development and poverty impacts of energy interventions
- to engage in a dialogue with energy policy makers and other stakeholders on the basis of the framework, with a view to incorporating these issues in energy policy.

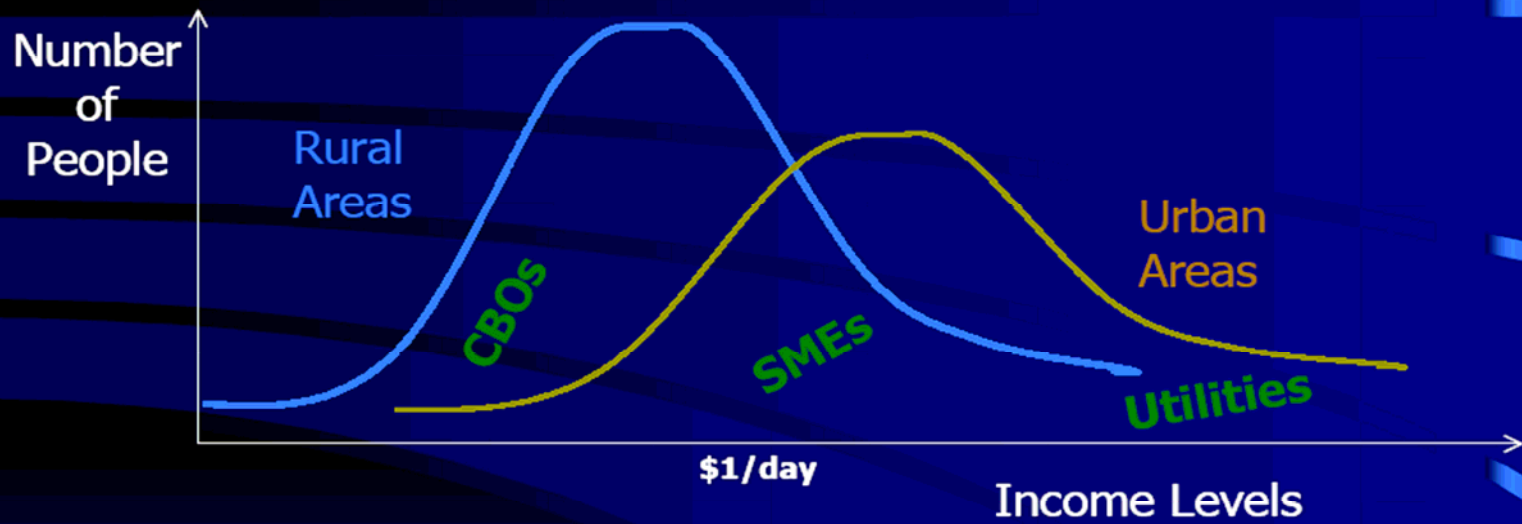




The formal contact between the Coordinator (Risoë) and the sub-contractors (African Centres) is with the Director (or Director of Energy Programme in the case of ENDA). The Director of the Centre is responsible for management of the staff assigned to the project. (See Appendix A)

All project partners (WP leaders and sub-contractors) refer to the Project Coordinator on management issues, while operational links to the target countries can be targeted directly through the 6 subcontractors.

Energy Service Enterprise Framework



KITE 

AREED: African Rural Energy Enterprise Development

AREED Partners



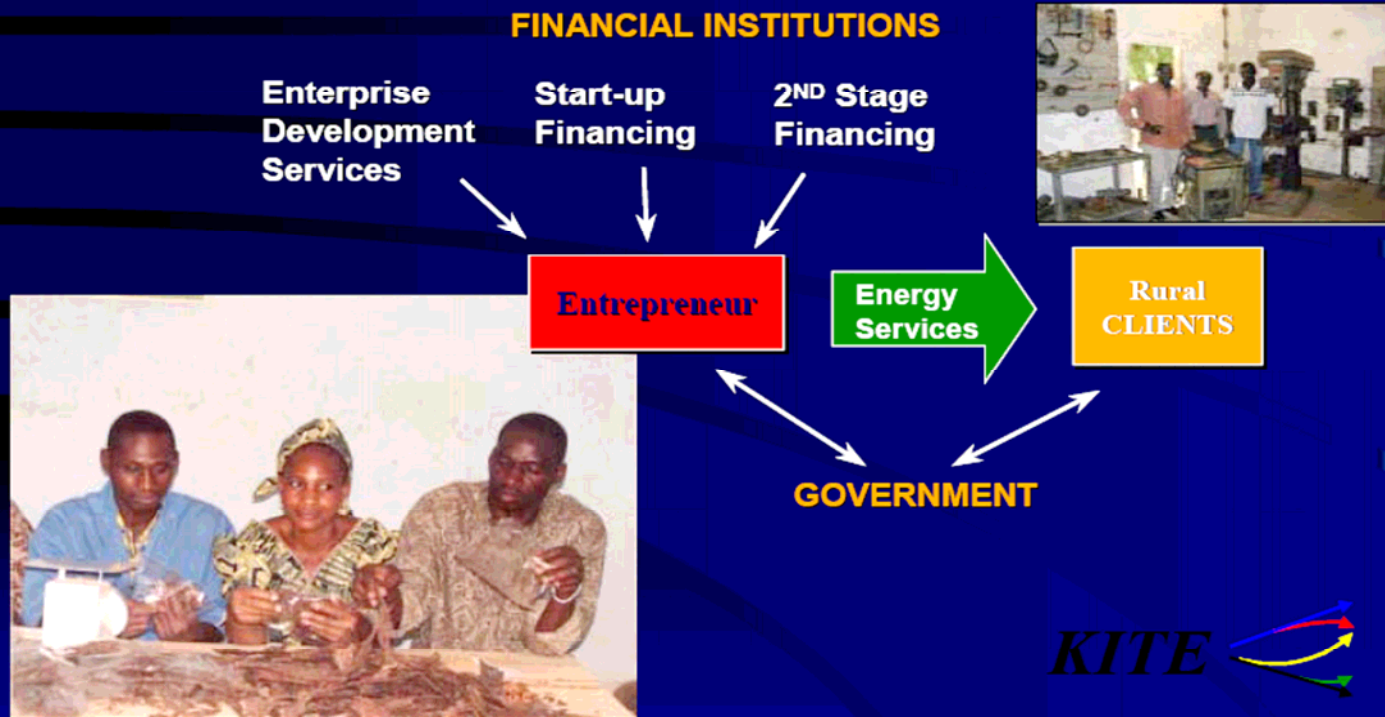
Others

- E&Co - New Jersey
- UNEP - Paris
- UNF



AREED Activities

Entrepreneurship Development and Investment Facilitation



KITE

AREED Portfolio

Productive Uses with
Biofuel

Energy Efficiency



Solar Crop Drying



Solar Water Heating

Charcoal Substitution

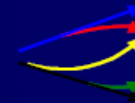
Solar PV Systems

Wind Power

Micro Hydro



KITE



Charcoal from eucalyptus
sawmill waste - Zambia





APPLES

UNEP
RISØ
CENTRE

- EU/COOPENER
- Alleviation of Poverty through Provision of Local Energy Services
- 32 months
- South Africa
- rural, peri-urban, urban poor

APPLES Partners

- ECN (Netherlands)
- Risø
- ECI, Univ. of Oxford
- ERC, Univ. of Cape Town
- Parallax (RSA)
- DME + DST (RSA) – co-finance

OBJECTIVES

- To understand energy needs and priorities within the target communities
 - To determine and demonstrate the best practices for energy service provision
 - To strengthen the embryonic network of existing Energy Centres
- Support SA Government policy & implementation

PROCESS

- Needs assessment
- Best practice
- Demonstration
- Capacity building
- Impact assessment
- Communication & awareness

Work packages being refined

POTENTIAL LOCATIONS

- Highflats - uBuhlebezwe
- Hluleka (to be evaluated) – Nyandeni
- Newlands - Buffalo City
- Khayelitsha & other low income settlements around Cape Town

APPLES



APPLES

- Integrated Energy Centres in rural/peri-urban areas
- New cleaner fuels, e.g. ethanol gel as substitute for paraffin (kerosene)
- Improved housing (energy efficiency)
- working closely with DME and DST

APPLES: main Risø responsibility

- Establish energy-related priorities for poor communities in (the selected) urban, peri-urban and rural settings
 - Carry out a (participative) energy needs assessment
 - Build local capacity and awareness through the participative process
 - Prioritise energy problems to feed into WP4 Best Practices (bearing in mind Govt. priorities and service delivery options)

APPLES will...

- Support existing Government initiatives
- Facilitate improved access in four locations
- Facilitate Local Economic Development
- Produce results to assist future South African and other African Government policy and practice
- Contribute to EU development programmes

Contribute to Alleviation of Poverty through the Provision of Local Energy Services